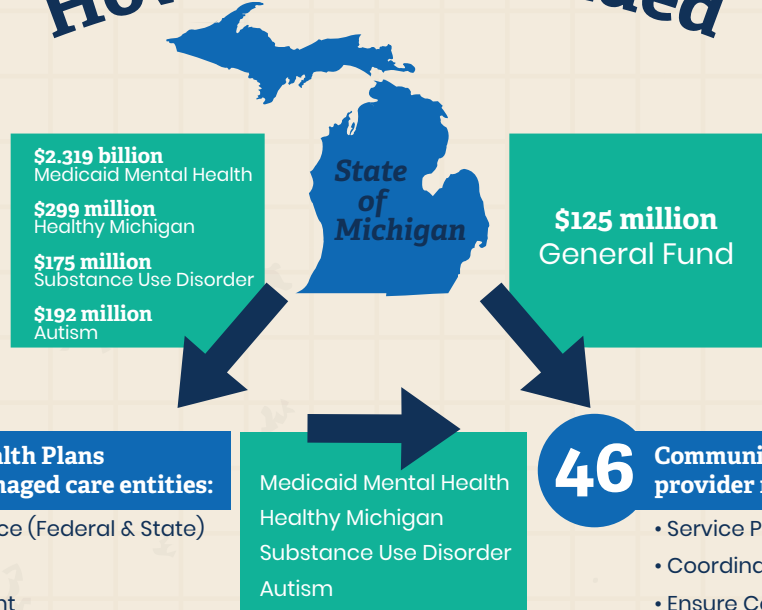


Community Mental Health Association of Michigan (CMHAM) is a trade association representing the 46 community mental health boards, 10 Prepaid Inpatient Health Plans, and more than 90 provider organizations that deliver services to adults with mental illness, children and adolescents with emotional disturbances, persons with intellectual/ developmentally disabilities, and those with substance use disorders in every community across the state.

## How we are Funded



**10** Prepaid Inpatient Health Plans behavioral health managed care entities:

- Oversight & Compliance (Federal & State)
- Admin
- Utilization Management

**46** Community Mental Health Centers and their provider network covering all 83 counties:

- Service Provision
- Coordinate Local Service Network
- Ensure Compliance (Federal & State)

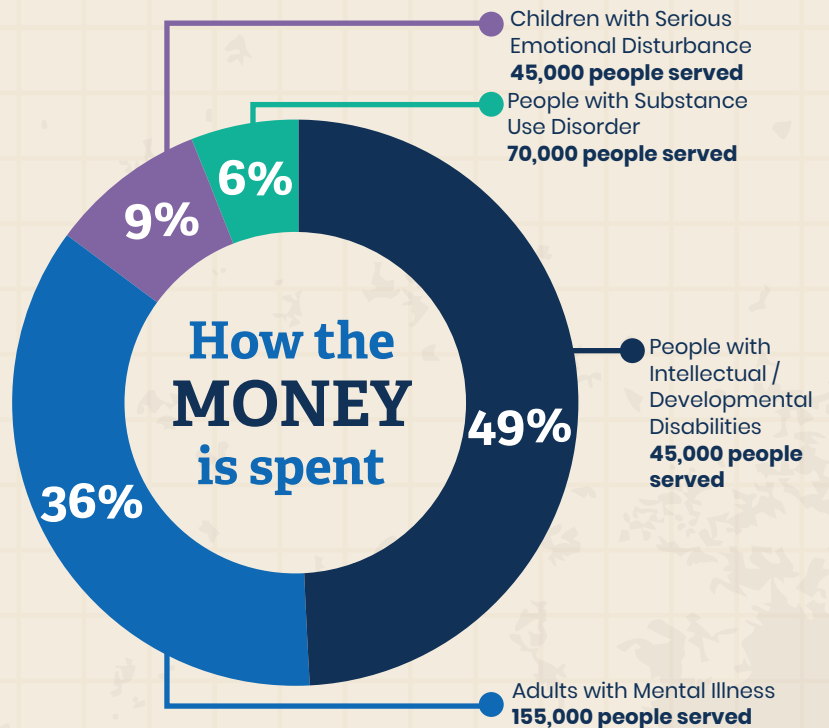
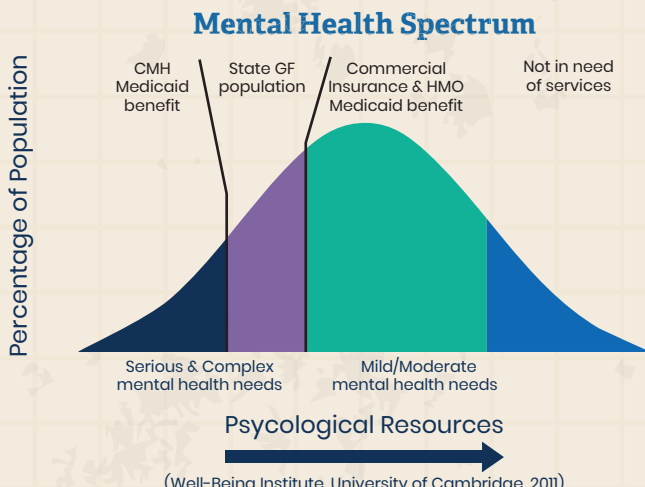
Medicaid Mental Health  
Healthy Michigan  
Substance Use Disorder  
Autism

## Who We Serve

Michigan's Public Mental Health System Serves 4 Main populations:

- Children with Serious Emotional Disturbances (examples: Obsessive-Compulsive Disorder (OCD) or Attention Deficit Hyperactivity Disorder (ADHD))
- People with Substance Use Disorders
- People with Developmental/Intellectual Disabilities
- Adults with Mental Illness.

Michigan is the **ONLY** state that serves all 4 populations in a managed care setting.

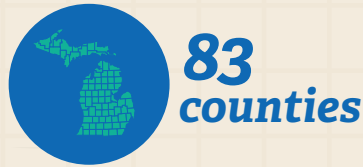


# MICHIGAN'S PUBLIC MENTAL HEALTH SYSTEM

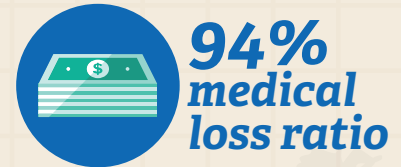
## DID YOU KNOW?



**1 in 5** in the United States are impacted by a mental illness.



**83 counties** in Michigan are covered by the 46 CMHs & 10 PIHPs.



**94% medical loss ratio** (i.e. the percentage of dollars spent on actual care) of Michigan's public PIHP system has a statewide average spent on administrative costs of 6%.



**Since 1997**, Michigan has remained the only state in the nation that provides publicly managed care for all four major populations; adults with mental illness, children and adolescents with emotional disturbances, persons with intellectual / developmental disabilities, and those with substance use disorders **[saving the state more than \$1 billion!]**



**24 hours a day / 7 days a week**, mental health professionals provide services for people with mental illness, intellectual / developmental disabilities, and substance use disorders regardless of ability to pay. As outlined in Michigan's Mental Health Code, Public Act 258 of 1974, Michigan's public mental health system serves as the local public safety net for the state's most vulnerable citizens.



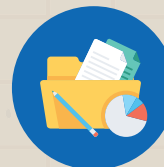
**91 percent** of the CMH budget is from Medicaid and Healthy MI plan. State General dollars that serve people without insurance makes up only 4% of the total budget.



**2 million people** statewide are impacted by one of the 300,000 people served by Michigan's public community mental health system when you include family, friends, neighbors, and co-workers.



Michigan's public community mental health system is a **\$3 billion industry** in our state employing more than **50,000 people**.



**750+** Michigan's CMH/PIHP system is leading the way with more than 750 on-the-ground healthcare integration initiatives across the state - co-location, electronic health records, and partnerships.

## Substance Use Disorders

Opioid deaths in Michigan are increasing. From 1999 to 2016, the total number of **overdose deaths involving any type of opioid increased more than 17 times in Michigan**, from 99 to 1,689.3 **Over six people in Michigan die every day from opioid-related causes.**

Every person can make a difference. Some things you can start doing today:

- Store medications safely.
- Don't share prescription medications.
- Learn to recognize the signs and symptoms of opioid abuse.
- Keep talking about the opioid epidemic and help break the stigma.

Healthy Michigan Plan provides dedicated and reliable funding for persons with substance use disorders and who have co-occurring mild to moderate mental disorders.

Prior to HMP (Medicaid Expansion), some regions had up to six month waiting lists for Medication Assisted Treatment (MAT) or withdrawal management /residential treatment. Oftentimes these are the most important services for people with opiate use disorders to begin the road to recovery.

**Over 70,000 people** receive Substance Use Disorder treatment and recovery services through Michigan's public system each year.